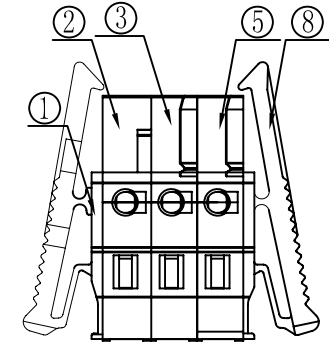
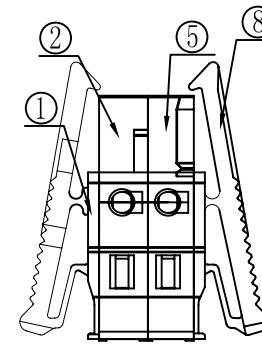
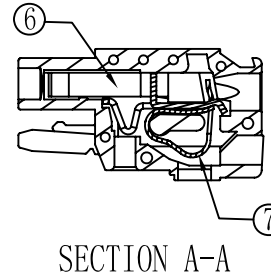
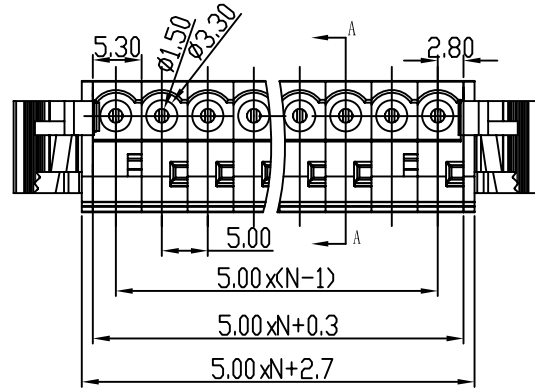
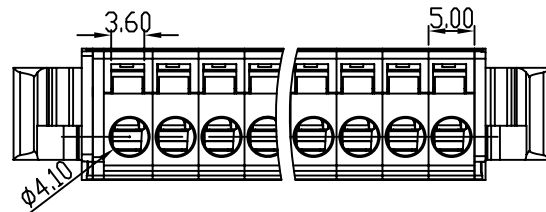
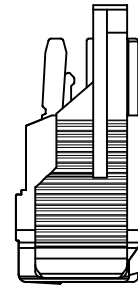
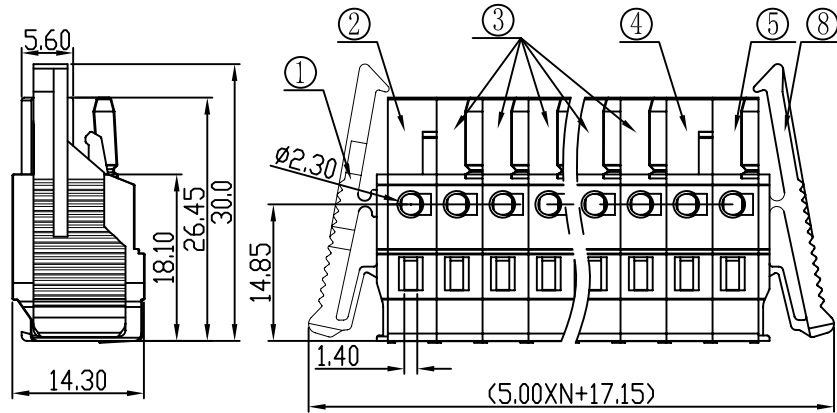


REVISION RECORD				
REV	ECD	DESCRIPTION	DRFT	DATE



*02P

*03P



Notes:

1. Pitch:5.0mm , Poles:XXP
2. Rated voltage/current:UL 300V/15A
VDE 320V/20A
3. Operation temperatures:-40°C~+105°C
4. Withstanding Voltage:AC2000V/1min
5. Insulation Resistance:5000MΩ/DC1000V
6. Wire Range:22~14AWG, 2.5mm²
7. Undimensioned Tolerances:

Pitch range in mm		Nominal dimension range in mm						—
to 6	over 6 to 10	over 10 to 24	to 30	over 30 to 60	over 60 to 100	over 100 to 150	over 150	∩ □
±0.10	±0.15	±0.25	±0.2	±0.3	±0.5	±0.7	±1.0	0.05/10

8	8EDGK-5.0-COVER 2 (挂钩2)	1086C4101E(H)	1	PA66	UL94V-0
7	DG242-SPRING	X000000990(H)	XX	Stainless Steel	
6	8EDGK-CLAMP	1086B00010(H)	XX	Phosphor Bronze	Ni plated
5	8EDGK-5.0-HOUSING (边件2)	1086A4101C(H)	1	PA66	UL94V-0
4	8EDGK-5.0-HOUSING (中间件2)	1086A4101B(H)	1, (XX≥4) 0, (XX≤3)	PA66	UL94V-0
3	8EDGK-5.0-HOUSING (中间件1)	1086A4101A(H)	XX-3, (XX≥4) XX-2, (XX≤3)	PA66	UL94V-0

2	8EDGK-5.0-HOUSING (边件1)	1086A4101D(H)	1	PA66	UL94V-0												
1	8EDGK-5.0-COVER 1 (挂钩1)	1086C4101D(H)	1	PA66	UL94V-0												
ITEM	NAME OF PART	NO. OF PART	Q'TY	MATERIAL	NOTES												
<table border="1"> <tr> <td>MM (INCH)</td> <td>DF TO Jordan.Y</td> <td>DATE 08/25/10'</td> </tr> <tr> <td>TOLERANCES EXCEPT AS NOTED</td> <td>CHKD</td> <td>DATE</td> </tr> <tr> <td></td> <td>MFD</td> <td>DATE</td> </tr> <tr> <td></td> <td>APPL</td> <td>DATE</td> </tr> </table>		MM (INCH)	DF TO Jordan.Y	DATE 08/25/10'	TOLERANCES EXCEPT AS NOTED	CHKD	DATE		MFD	DATE		APPL	DATE	宁波高正电子有限公司 DEGSON ELECTRONICS CO., LTD			
MM (INCH)	DF TO Jordan.Y	DATE 08/25/10'															
TOLERANCES EXCEPT AS NOTED	CHKD	DATE															
	MFD	DATE															
	APPL	DATE															
DETACHED LISTS		NAME: 8EDGK-5.0-XXP-11-01A(H)															
ANGLES ± 1°		DRAWING NO. 8EDGK-5.0-EO2															
THIRD ANGLE PROJECTION		/PART NO.															
SCALE: 1:1		DD NDT SCALE DRAWING															
		SHEET 1 OF 1															